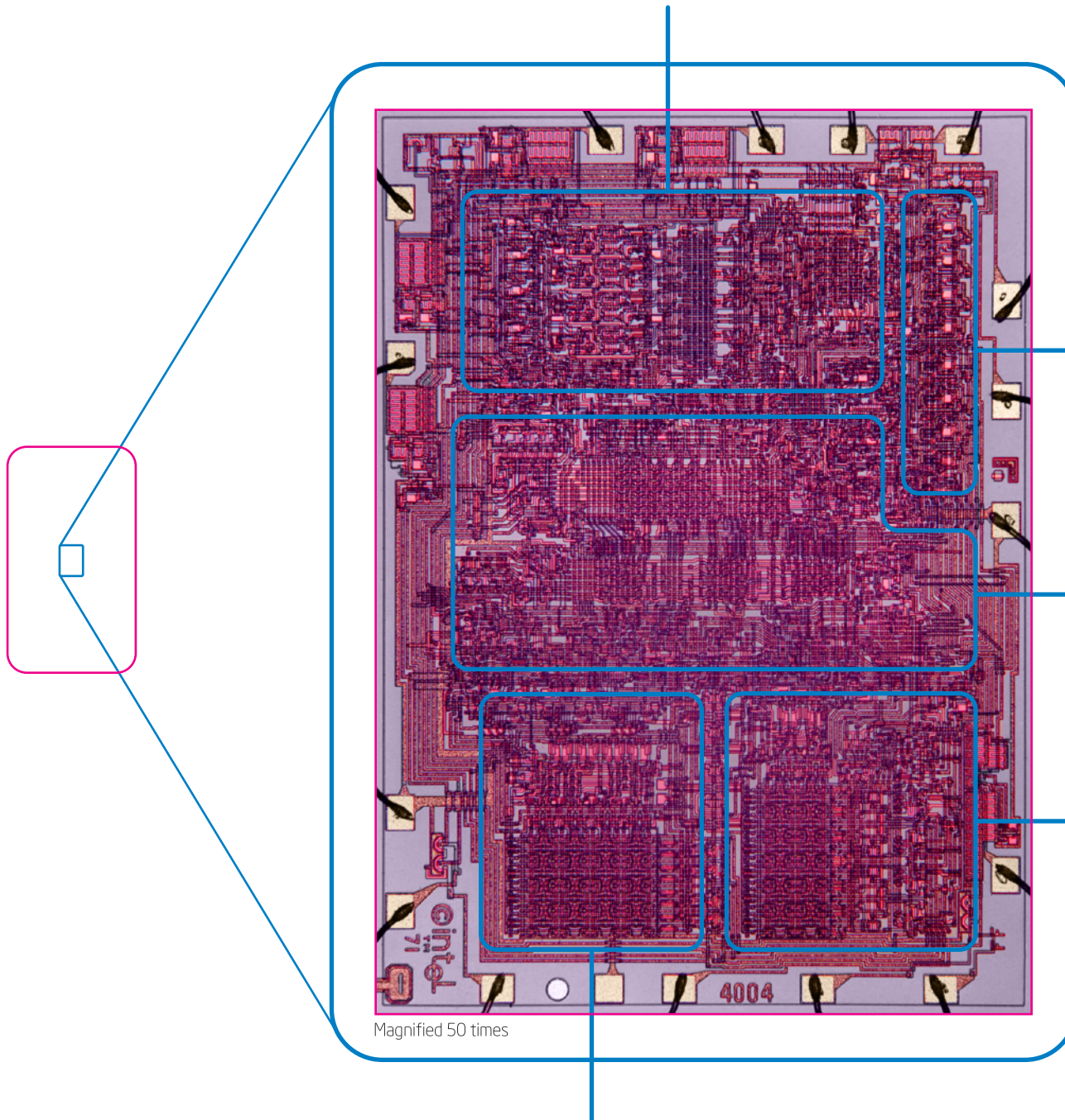


The **Arithmetic Unit** does all the math.



The **Eight Phase Clock** times when things happen.

The **Instruction Decoder** figures out what needs to happen next and tells the other parts of the microprocessor how to do it.

The **Stack and Program Counter** keeps track of where the program is.

The **Index Registers** provide scratchpad storage and point to information in the memory chips.